

Horoscope and Hazel Road Bridges

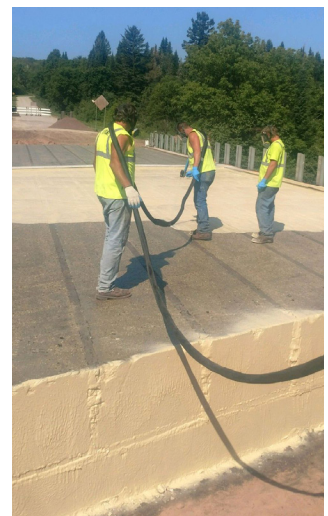
Houghton County, Michigan

PROJECT DATE
2017

SUBSTRATE
Concrete

INTRODUCTION

Houghton County hosted a major copper-mining industry in the late 19th and early 20th centuries. The county has an area of 1,502 square miles of land, of which 492 square miles is water. The government operates and maintains local bridges that span these waterways. Houghton County has incorporated Wasser's Polyflex Bridge Deck Waterproofing System to protect their valuable bridge assets from salt and the effects of freeze/ thaw cycles.



OWNER

Houghton County Road Commission

PROJECT

Bridge Deck Waterproofing

CONTRACTORS

Smith's Waterproofing

STRUCTURE

Concrete Box Beam Bridges

SUBSTRATE

Concrete

APPLICATION METHOD

High Pressure Impingement Spray, Plural Component Heated Pumps.

- 1 coat Wasser Polyflex 111 PU Primer
- 1 coat Wasser Polyflex 311 Membrane
- 1 coat Wasser Polyflex 411 ShearCoat with Aggregate
- 1 coat Wasser Polyflex 511 TackCoat

DIMENSIONS

8,110 sq.ft

